

Search results for: "National Panel (Internationally Qualified)"

Showing 1 - 14 of 28

Sort by: Full Name ▾

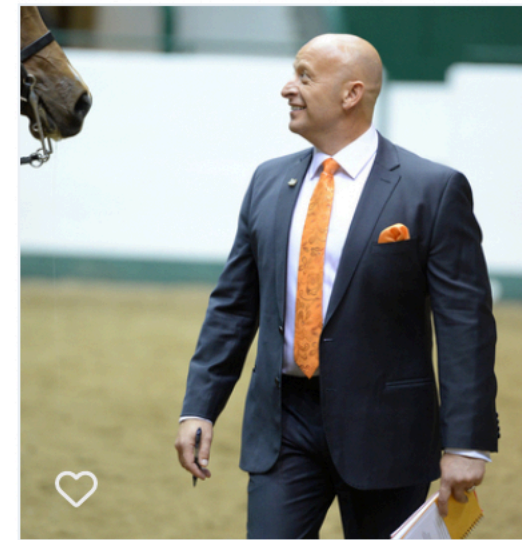


Bellchambers, Jayne - holds a current WWCC

National Panel (Internationally Qualified)

📍 YARRAGON, Australia, VIC

☎ [0419 346 218](tel:0419346218)



Benjamin, Scott - holds a current WWCC

National Panel (Internationally Qualified)

📍 NSW

☎ [0466 627 744](tel:0466627744)

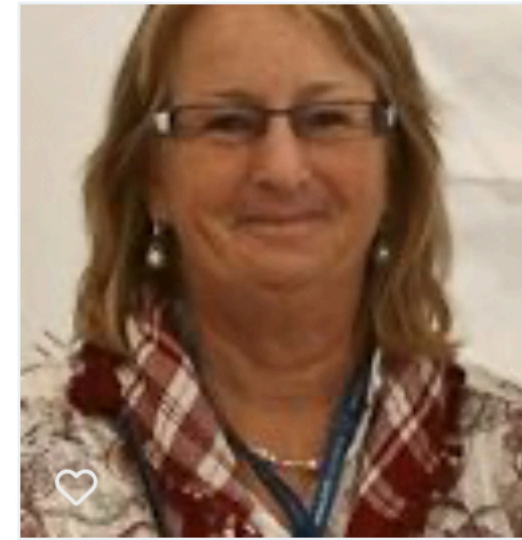


Bigg, Mieke - holds a current WWCC

National Panel (Internationally Qualified)

📍 QLD

☎ [0417 713 440](tel:0417713440)

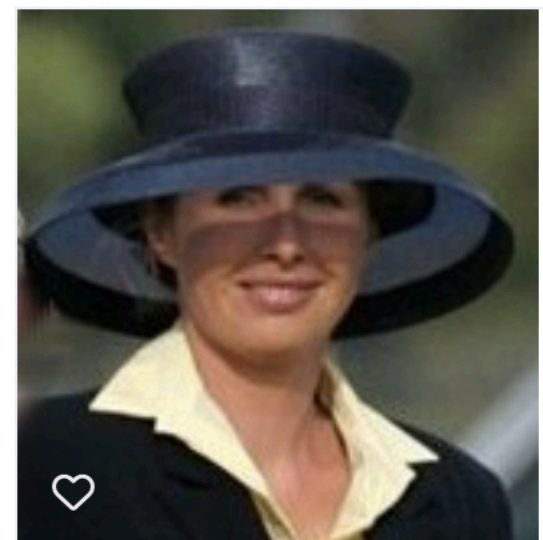


Cox, Kim - holds a current WWCC

National Panel (Internationally Qualified)

📍 NYMBOIDA, NSW

☎ [0401 071 695](tel:0401071695)



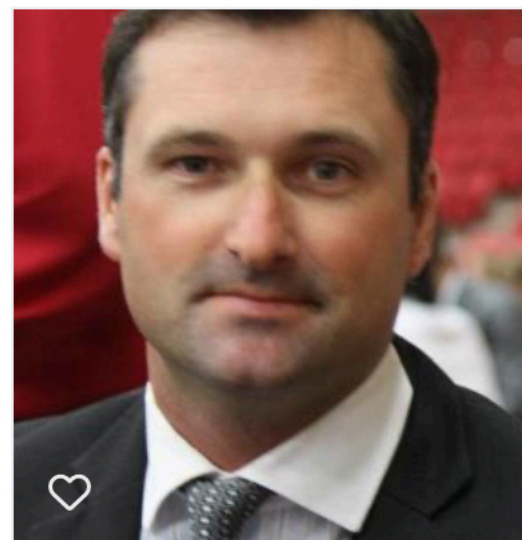
Dertell, Kate - holds a current WWCC

National Panel (Internationally Qualified)

📍 VIC

☎ [0412 304 500](tel:0412304500)

TRAINER



Dertell, Doyle - holds a current WWCC

National Panel (Internationally Qualified)

📍 VIC

☎ [0411 756 683](tel:0411756683)

TRAINER

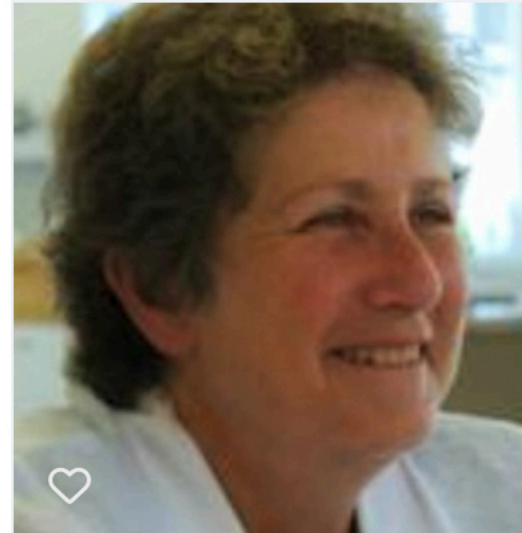


Devenish, Cherie

National Panel (Internationally Qualified)

📍 QLD

☎ [0427 224 416](tel:0427224416)

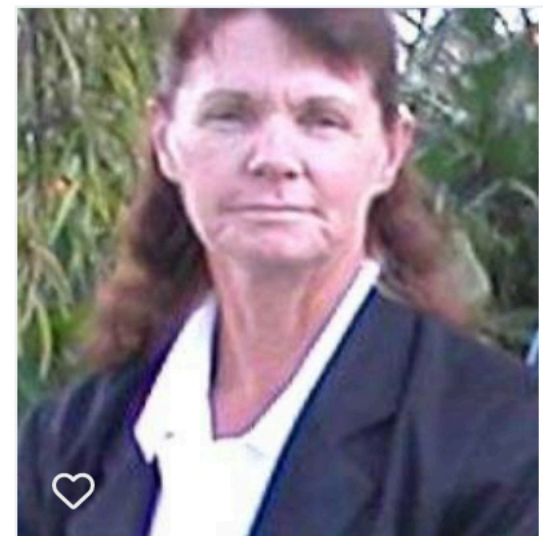


Dohan, Helen, - holds a current WWCC

National Panel (Internationally Qualified)

📍 FREEMANS REACH, NSW

☎ [0418 484 592](tel:0418484592)



Downes, Yvonne - holds a current WWCC

National Panel (Internationally Qualified)

📍 TAS

☎ [0427-562314](tel:0427562314)

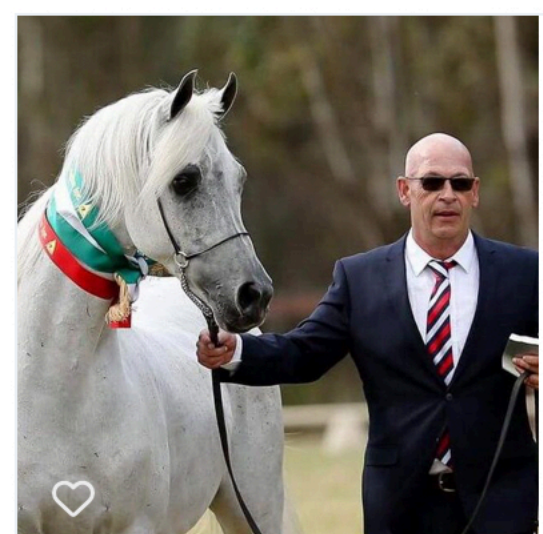


Jones, Sheila - holds a current WWCC

National Panel (Internationally Qualified)

📍 VIC

☎ [0408 515 685](tel:0408515685)

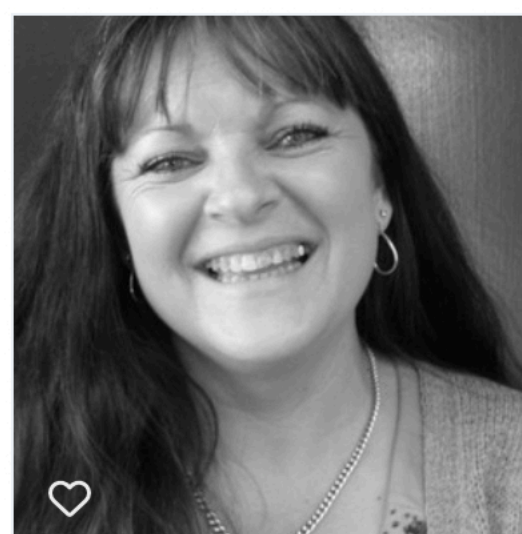


King, Adam - holds a current WWCC

National Panel (Internationally Qualified)

📍 KURRAJONG HILLS, NSW

TRAINER



Kinnear, Narelle - holds a current WWCC

National Panel (Internationally Qualified)

📍 CASTLEREAGH, NSW

☎ [0417 285 588](tel:0417285588)



Liddle, Greg - holds a current WWCC

National Panel (Internationally Qualified)

📍 NSW

☎ [0419 407 154](tel:0419407154)



Lilley, Glenys - holds a valid WWCC

National Panel (Internationally Qualified)

📍 NSW

☎ [0413 273 349](tel:0413273349)

Search results for: "National Panel (Internationally Qualified)"

Showing 15 - 28 of 28

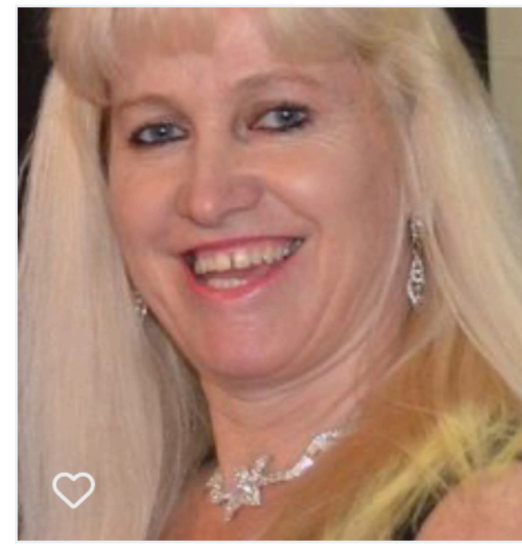
Sort by: Full Name ▾



[Lilley, Mark - holds a current WWCC](#)

[National Panel \(Internationally Qualified\)](#)

📍 QLD
☎ [0450 155 905](#)



[O'Connor, Belinda \(nee Hoille\)](#)

[National Panel \(Internationally Qualified\)](#)

📍 VIC
☎ [0401 916436](#)



[O'Dea, Marillyn - holds a current WWCC](#)

[National Panel \(Internationally Qualified\)](#)

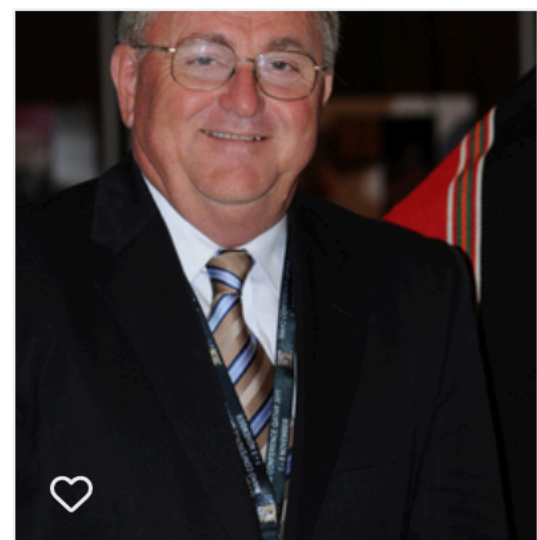
📍 NSW
☎ [0466 830 279](#)



[Oberg, Sue](#)

[National Panel \(Internationally Qualified\)](#)

📍 Bringelly, NSW
☎ [0413 586 824](#)



[Pond, Peter - holds a current WWCC](#)

[National Panel \(Internationally Qualified\)](#)

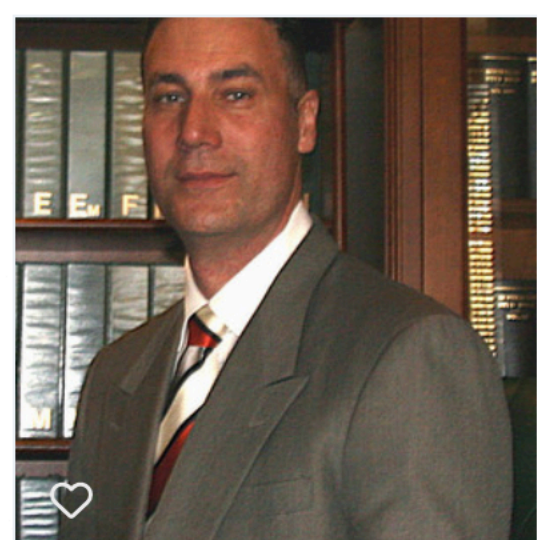
📍 NSW
☎ [0414 628687](#)



[Potts, Carolyn - holds a current WWCC](#)

[National Panel \(Internationally Qualified\)](#)

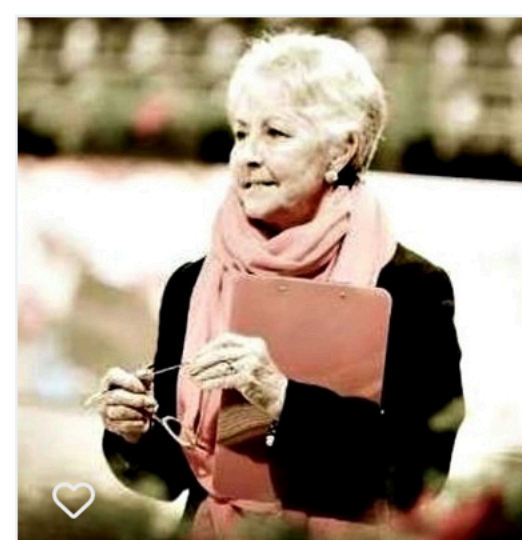
📍 PROSPECT, SA
☎ [0407 995149](#)



[Preston, Allan - holds a current WWCC](#)

[National Panel \(Internationally Qualified\)](#)

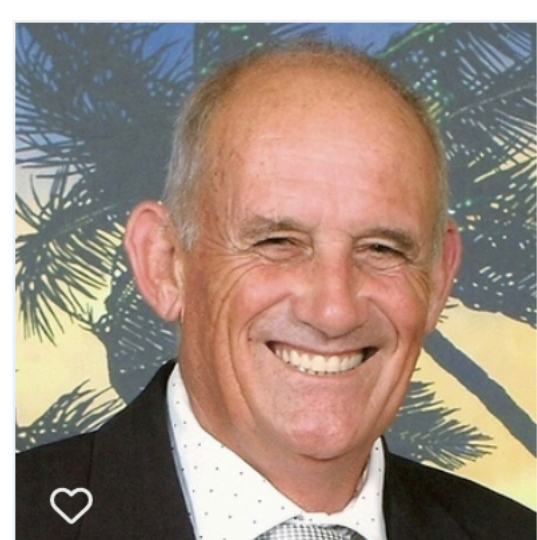
📍 Luddenham, NSW
☎ [+61 416183478](#)



[Rutherford, Colleen - holds a current WWCC](#)

[National Panel \(Internationally Qualified\)](#)

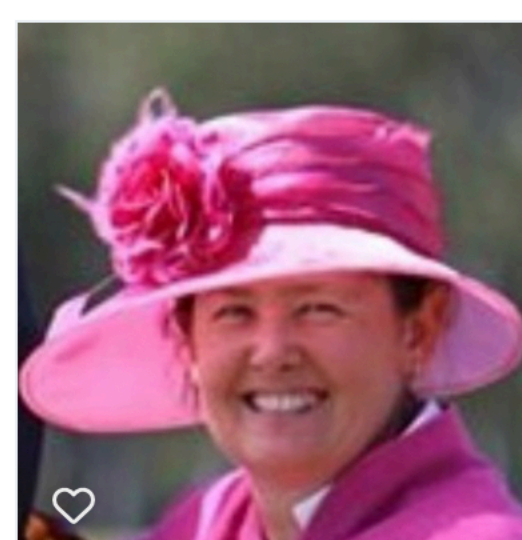
📍 North Maclean, QLD
☎ [0429 871115](#)



[Rutherford, Doug - holds a current WWCC](#)

[National Panel \(Internationally Qualified\)](#)

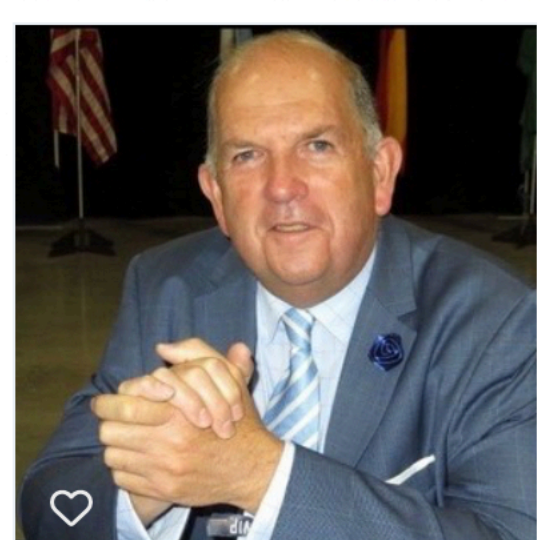
📍 WILLOWBANK, QLD
☎ [0428 117 750](#)



[Siggers, Kathy - holds a current WWCC](#)

[National Panel \(Internationally Qualified\)](#)

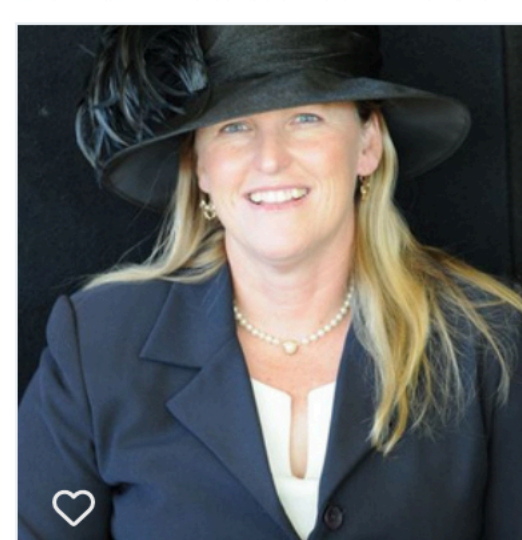
📍 QLD
☎ [0413 054 182](#)



[Smith, Graham - holds a current WWCC](#)

[National Panel \(Internationally Qualified\)](#)

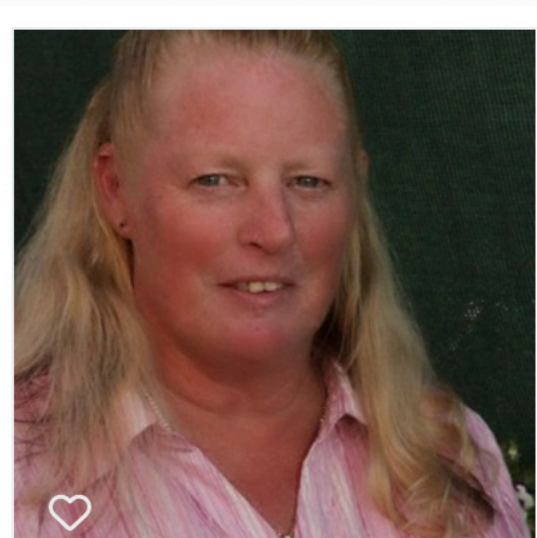
📍 Dickson, ACT
☎ [0418 627101](#)



[Vickery, Annette - holds a current WWCC](#)

[National Panel \(Internationally Qualified\)](#)

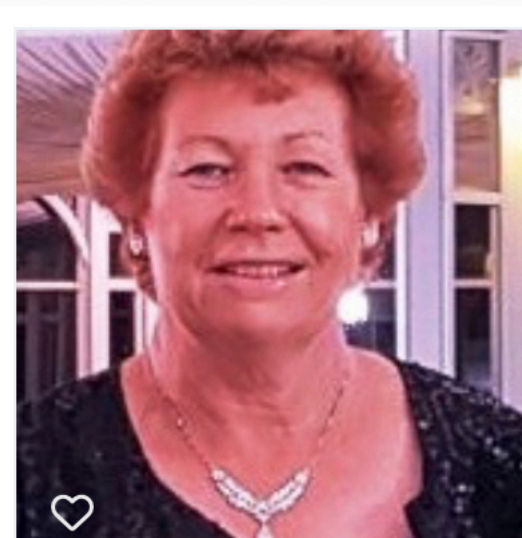
📍 NSW
☎ [0418 251580](#)



[WallNancy, - holds a current WWCC](#)

[National Panel \(Internationally Qualified\)](#)

📍 WA
☎ [0419 803014](#)



[Watson, Debra - holds a current WWCC](#)

[National Panel \(Internationally Qualified\)](#)

📍 QLD
☎ [0408 656 776](#)